



# Electrolux

## Instruction Book

UltimateTaste500

Air Fryer

E5AF1-510P



**EN** INSTRUCTION BOOK

**CNT** 使用手冊

## WE'RE THINKING OF YOU

Thank you for purchasing an Electrolux appliance. You've chosen a product that brings with it decades of professional experience and innovation. Ingenious and stylish, it has been designed with you in mind. So whenever you use it, you can be safe in the knowledge that you'll get great results every time.

**Welcome to Electrolux.**

Visit our website to:



Get usage advice, brochures, trouble shooter, service information:  
<https://www.electrolux.com.tw/support/#/>



Register your product for better service:  
<https://www.electrolux.com.tw/login-options/?returnUrl=/my-account/register-new-product/#/>



Buy accessories and consumables for your appliance:  
<https://www.electrolux.com.tw/appliances/accessories/#/>

## CUSTOMER CARE AND SERVICE

When contacting the service center, ensure that you have following data available. Model number, PNC, and serial number can be found on the rating plate.

Reference:

▼ 掃描QR碼以註冊

www.electrolux.com

QR Code  
20 x 20 mm

 **Electrolux**

型號: E5AF1-510P  
品名: 氣炸鍋  
PNC: 910 004 055  
類別: AF-F4010  
額定電壓及頻率: 110V~60Hz  
額定消耗功率: 1350 W  
製造年份: YYY Y

製造號碼: YWW00000

進口商/委製商: 新加坡商伊萊克斯股份有限公司台灣分公司  
地址: 台北市松山區敦化南路一段3號4樓  
電話: 0800-888-259  
Electrolux 集團監製 中國製造



R33428  
RoHS

新加坡商伊萊克斯股份有限公司 台灣分公司

105408台北市松山區敦化南路一段3號4樓

免付費客服專線: 0800-888-259

電子信箱: [service.tw@electrolux.com](mailto:service.tw@electrolux.com)

## Safety Advice

This appliance can be used by children aged from 8 years and above and persons with reduced physical, sensory or mental capabilities or lack of experience and knowledge if they are supervised or have received instruction concerning how to safely use the appliance and understand the hazards involved. Children shall not play with the appliance. Cleaning and user maintenance shall not be performed by children without supervision.

This appliance is not intended for use by persons (including children) with reduced physical, sensory or mental capabilities or lack of experience and knowledge, unless they have been given supervision or instruction concerning use of the appliance in a safe way and understand the hazards involved by a person responsible for their safety. Children should be supervised to ensure that they do not play with the appliance.

Please keep the air fryer and the power cord out of the reach of children less than 8 years.

This appliance is intended for normal household use only.

If the power cord is damaged or broken, it must be replaced by a service agent or similarly qualified persons to avoid safety hazards.

The accessible surfaces may become hot during use.

Do not cover the air inlet and the air outlet openings while the appliance is operating.

Always return the appliance to an authorized service center for examination or repair.

Do not attempt to repair the appliance yourself.

Do not place the appliance on or near a hot gas stove, any kind of electric stove, electric cooking plates or in a heated oven.

Always make sure that the plug is inserted into the socket properly.

Keep the mains cord away from hot surfaces or sharp objects to avoid damage.

Never put anything flammable, explosive or corrosive in the basket.

Do not excessively pinch, bend, twist or place heavy objects on the power cord to prevent from exposing or breaking its core.

Do not use the appliance if the plug, the main cord or the appliance itself is damaged.

Never start cooking without the basket being in place.

Do not fill up the basket above the "MAX" line in order to prevent food contact with the heating element. Do not touch the basket directly with your hands during or right after use to avoid getting scalded.

Do not use any plastic utensils or normal paper wrapping materials to wrap food for cooking.

Do not insert pins, wires or other objects into any of the openings of the air fryer to avoid an electrical shock or injury.

Please be sure to unplug the air fryer before cleaning or repairing it.

Do not move or shake the air fryer during use.

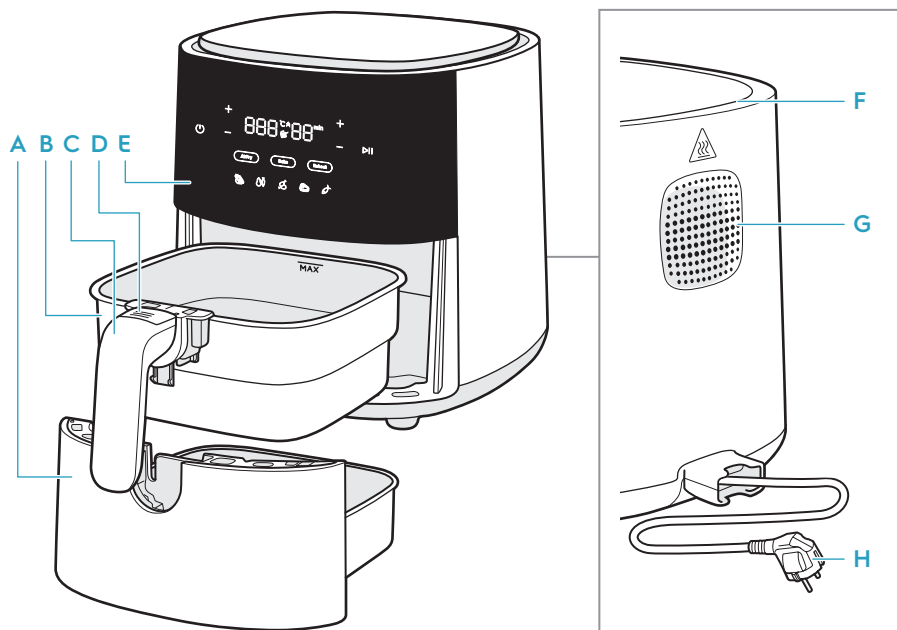
Do not insert any foreign objects into the safety switch to avoid any danger.

**CAUTION: Hot surfaces.**



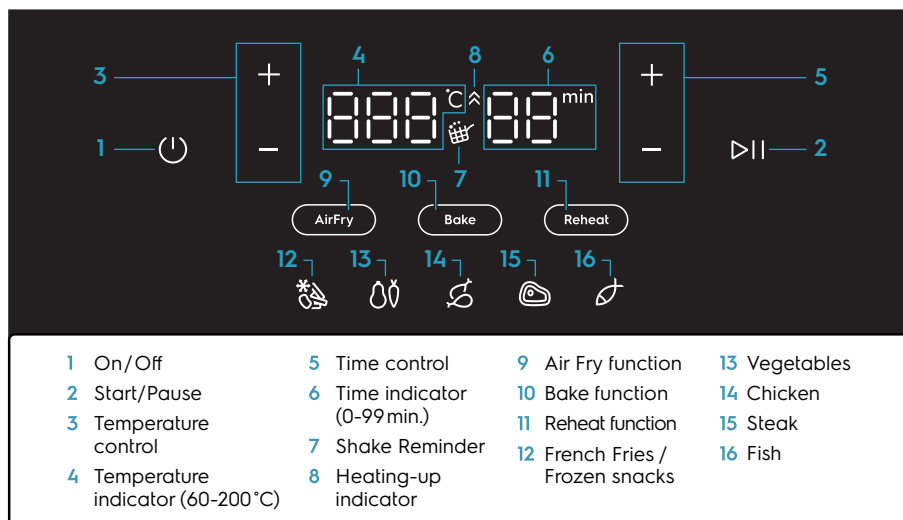
This appliance must not be supplied through an external switching device.

## General Overview



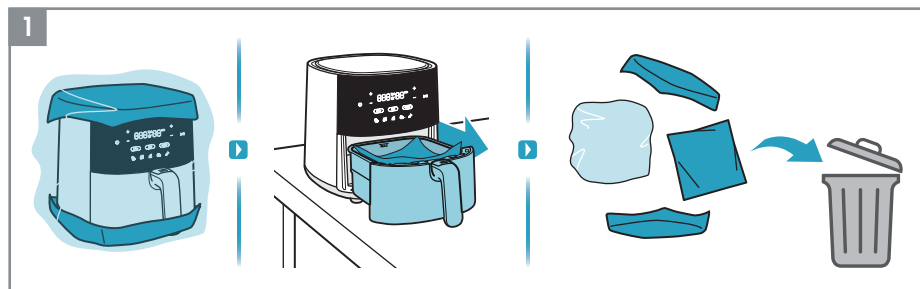
- |                 |                         |              |             |
|-----------------|-------------------------|--------------|-------------|
| A Pan           | D Basket release button | F Air inlet  | H Main cord |
| B Basket        | E Control panel         | G Air outlet |             |
| C Basket handle |                         |              |             |

Accessories may vary from model to model

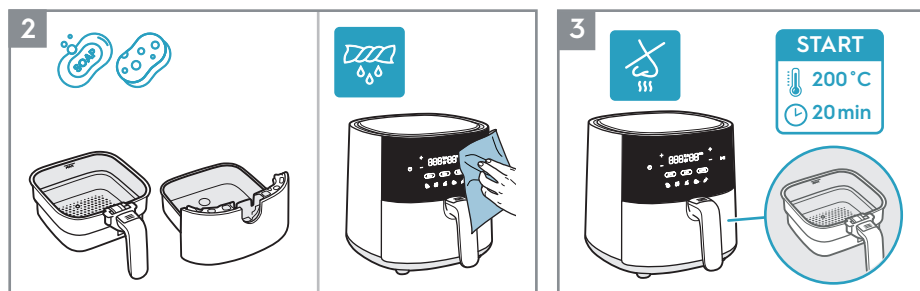




## Before first use

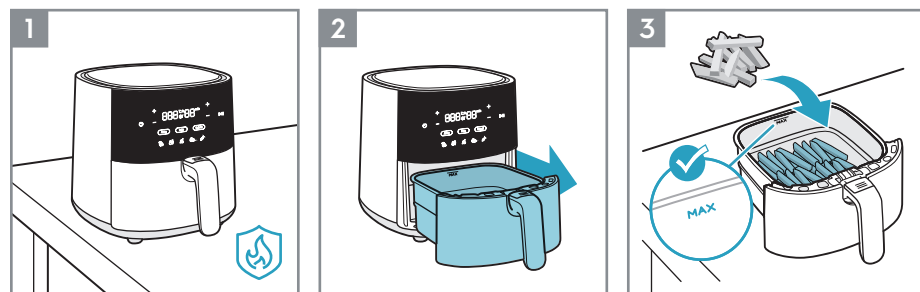


1. Remove all the packaging and protective material.

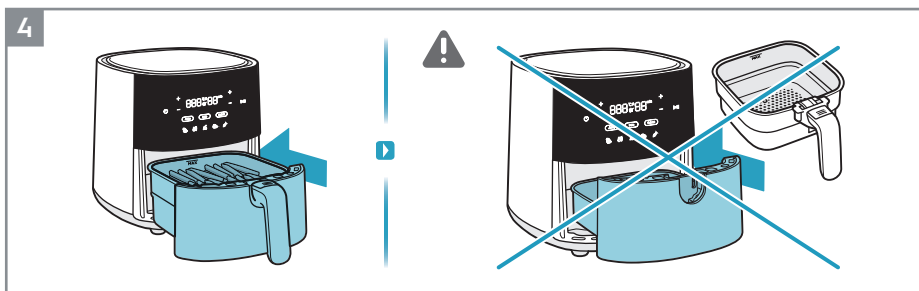


2. Clean the basket and pan with warm water and dish soap. Wipe inside and outside of the appliance with a soft cloth.
3. It is normal for a new unit to emit odors the first few times it is operated.  
Run the empty air fryer at 200°C for 20 minutes before first use to avoid that.

## How to use

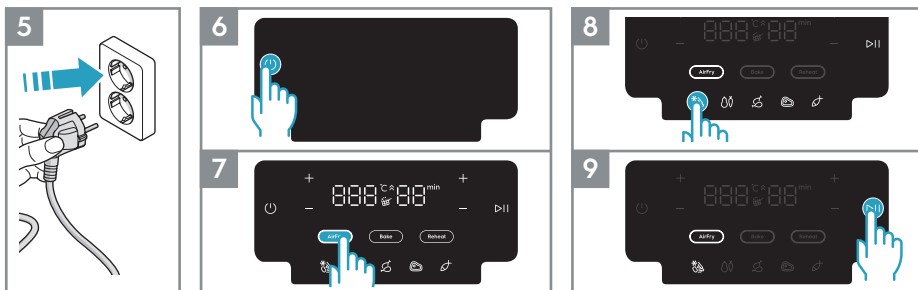


1. Place the appliance on a flat, stable and heat-resistance surface.
2. Pull out the pan and place it on a stable surface.
3. Put the food in the basket, observing the "MAX." capacity indication.

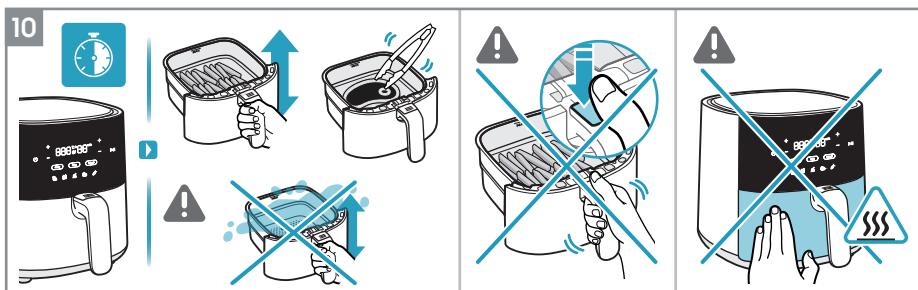


4. Push the pan with food completely back into the appliance.

**CAUTION:** Do not use the appliance without the basket.



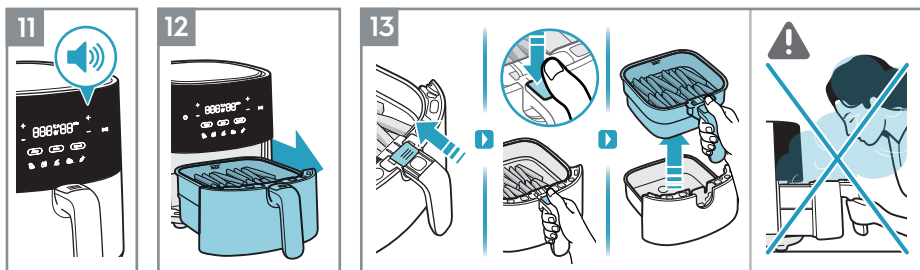
5. Plug in the appliance.  
6. Press the On/Off button.  
7. Select the desired cooking method. For example, Air Fry function.  
8. Adjust the time and temperature to your taste or select one of the pre-set recipes. For example, French Fries.  
9. Press the Start/ Pause button.



10. Depending on the type of ingredient, flip the food mid-cooking or every 7 minutes by using a heat-resistant tool or by just carefully shaking the food inside the basket. (see Cooking Guide).

**CAUTION:** Be careful not to press the "Basket Release Button" when shaking the food.

**CAUTION:** Be careful with hot surfaces when the appliance is in use.



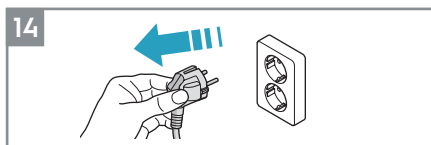
11. At the end of the cooking time, the appliance will issue a beep signal.

12. Carefully remove the pan and place it on a heat-resistant surface.

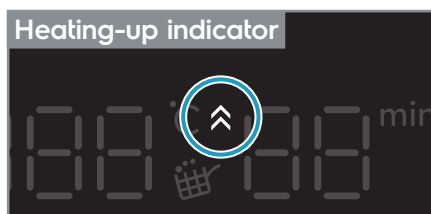
13. To remove the basket from the pan, follow these instructions:

- Slide the transparent button cover
- Press the "Basket Release Button"
- Lift the basket from the pan

**CAUTION:** Hot steam can come out of the basket when it is opened mid or at the end of cooking. Make sure your face, arms and hands are away from the steam when opening it.



14. Unplug the appliance after using it.

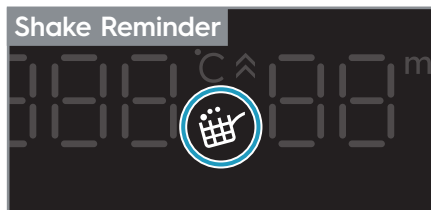


### Heating-up indicator.

The "Heating-up indicator" is activated when the "Bake function" is selected, and it works as a pre-heat function so that the air fryer has the ideal temperature before cooking your favorite baked recipes. The timer only starts to count down once the pre-heating has finished.

During preheating, you can tap the "Start/Pause" button to start the timer without completing the preheating process. The "Time indicator" digits will blink three times, and the countdown will begin.

**NOTE:** During preheating, the display continues to show the rising temperature. Once the target temperature is reached, the display will blink three times while a beep sound will repeat for three times. Then, the "Heating-up indicator" icon will turn off.










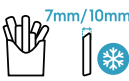



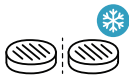
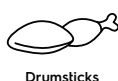





### Shake Reminder

The "Shake Reminder" is activated during the pre-sets of some recipes, such as French Fries/Frozen Snacks, Vegetables and Chicken.

When it is time to shake or flip your food, the "Shake Reminder" icon will light up and blink for one minute, while a beep sound will repeat for three times.

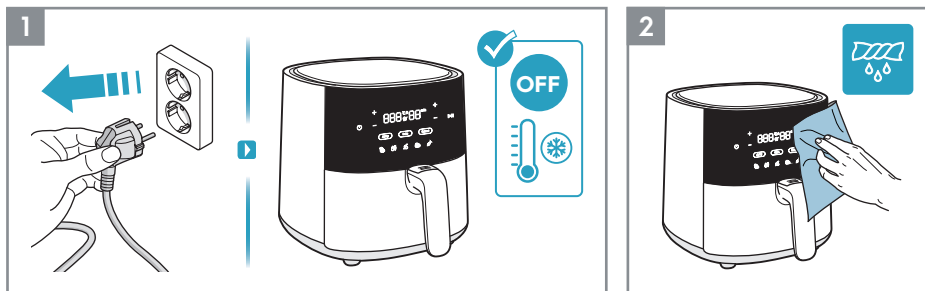
The "Shake Reminder" is not mandatory, hence the cooking will continue as usual even if the food is not flipped or shaken.

# Cooking Guide

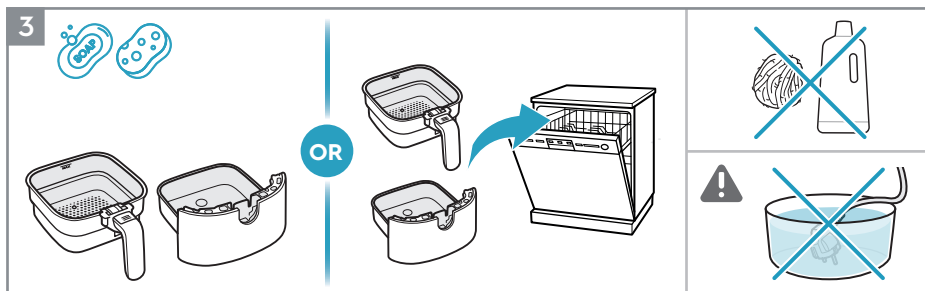
				 Shake	 Flip	 Oil
 Frozen french fries	300-800g	15-30 min	180°C	✓		
 Fresh french fries	300-800g	20-30 min	180°C	✓		✓
 Vegetables	100-500g	10-20 min	170°C	✓		✓
 Meat	100-400g	10 min	200°C		✓	
 Frozen burgers	100-200g	10 min	200°C		✓	
 Drumsticks	100-500g	10-30 min	180°C		✓	
 Chicken wings	100-500g	13-20 min	180°C		✓	
 Whole chicken	800-1200g	45-60 min	180°C		✓	
 Seafood	100-500g	10-15 min	140°C		✓	
 Frozen seafood	100-500g	10 min	180°C		✓	
 Muffins	25-50g each	10 min	170°C			

# Cleaning

EN  
CNT



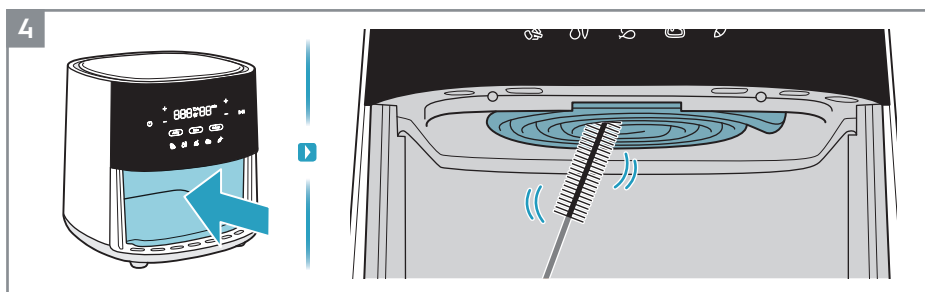
1. Always unplug the appliance and wait until it cools down before cleaning it.
2. Wipe the outside of the appliance with a soft cloth.



3. Clean the basket and pan with warm water and dish soap, or place them in the dishwasher.

**NOTE:** Avoid using abrasive cleaning products or metal tools in order to protect the non-stick coating.

**CAUTION:** Never submerge the product, its cord or plug in water or any other liquid.



4. Clean the heating element with a cleaning brush.


**NOTE:** Ensure the appliance is completely cooled down before cleaning the heating element.


## What to do if...

Problem	Check if...
You cannot activate or operate the appliance.	<ul style="list-style-type: none"> <li>• The appliance is correctly connected to an electrical supply.</li> <li>• The basket and pan are in the correct position. Ensure they are completely pushed into the appliance to enable the electrical supply.</li> <li>• The cooking time is set.</li> </ul>
You cannot slide the pan into the appliance.	<ul style="list-style-type: none"> <li>• The basket is filled over its maximum capacity.</li> <li>• The basket is placed correctly. It has to click when you place it in the pan.</li> <li>• There's an object under the pan that is an obstacle to close it properly.</li> </ul>
White smoke comes out of the appliance.	<ul style="list-style-type: none"> <li>• The food you prepare is too greasy.</li> <li>• The pan and the basket are clean.</li> </ul>
The display shows E1	<ul style="list-style-type: none"> <li>• The temperature sensor is cutting out or disconnecting.</li> </ul>
The display shows E2	<ul style="list-style-type: none"> <li>• The temperature sensor has short-circuited.</li> </ul>

\* In case the display shows E1 or E2 error, the appliance must be repaired by a Service Center.

## ENVIRONMENTAL CONCERNS

Recycle materials with the symbol . Put the packaging in relevant containers to recycle it. Help protect the environment and human health by recycling waste of electrical and electronic appliances.

Do not dispose appliances marked with the symbol  with the household waste. Return the product to your local recycling facility or contact your municipal office.

Electrolux reserves the right to change products, information and specifications without notice.

# 伊萊克斯 以人為本的貼心設計

感謝您購買伊萊克斯電器。您選擇了一款集數十年專業經驗和創新於一身的產品。它作工精巧，外觀時尚，細節設計無不為您著想。無論您何時使用，都可以完全放心，它將成為您生活中的出色助手。

歡迎使用伊萊克斯產品。

請瀏覽我們的網站：



獲得使用建議、產品手冊、故障解決方案、服務資訊：

<https://www.electrolux.com.tw/support/#/>



註冊您的產品，獲得更完善的服務：

<https://www.electrolux.com.tw/login-options/?returnUrl=/my-account/register-new-product/#/>



為您的電器購買配件和耗材：

<https://www.electrolux.com.tw/appliances/accessories/#/>

## 客戶關愛與服務

當您聯絡服務中心時，請確保您已準備好以下資訊。

產品型號、PNC和製造號碼，這些資訊均可在產品標籤上找到。

參考樣式：



新加坡商伊萊克斯股份有限公司 台灣分公司

105408台北市松山區敦化南路一段3號4樓

免付費客服專線: 0800-888-259

電子信箱: [service.tw@electrolux.com](mailto:service.tw@electrolux.com)

## 安全建議

8 歲及以上的兒童以及身體、感官或智力存在缺陷或缺乏經驗和知識的人士如需使用本電器,應在監督下使用產品,或接受有關如何安全使用本電器並瞭解其危害的相關指導。兒童不得將此電器當作玩具。在沒有監督的情況下,兒童不得進行清潔和維護。

請將氣炸鍋和電源線放在 8 歲以下兒童接觸不到的地方。

此電器僅供普通家庭使用,請勿於室外使用。

如果電源線損壞或斷裂,必須由服務代理商或其他具有資格的人員更換,以避免安全隱患。

可接觸的表面在使用過程中可能會變熱。

當電器運行時,不要蓋住進氣口和出氣口。

請務必將電器送至伊萊克斯客服中心檢查或維修。請勿試圖自己修理電器。

請勿將電器放在熱煤氣爐、任何類型的電爐、電烹飪板上,或加熱的烤箱中或附近。

請務必確保插頭正確插入插座。

保持電源線遠離熱表面或尖銳物體,以免損壞。

切勿將易燃、易爆或腐蝕性物品放入炸籃。

請勿過度擠壓、彎曲、扭曲電源線或在電源線上壓放重物,以免使芯線裸露或折斷。

如果插頭、電源線或電器本身已損壞,請勿使用電器。

炸籃放好之前,請勿開始烹飪。

為了防止食物接觸加熱元件,請勿讓炸籃中的食物高度超過“MAX”指示線。在使用過程中或使用後請勿直接用手觸摸炸籃,以免燙傷。


請勿使用任何塑料器皿或普通的紙質材料來包裹烹飪食物。

請勿將針腳、電線或其他物體插入氣炸鍋的任何開口處,以免觸電或造成傷害。

在清洗或修理氣炸鍋前,請務必拔掉插頭。

使用過程中請勿移動或搖晃氣炸鍋。

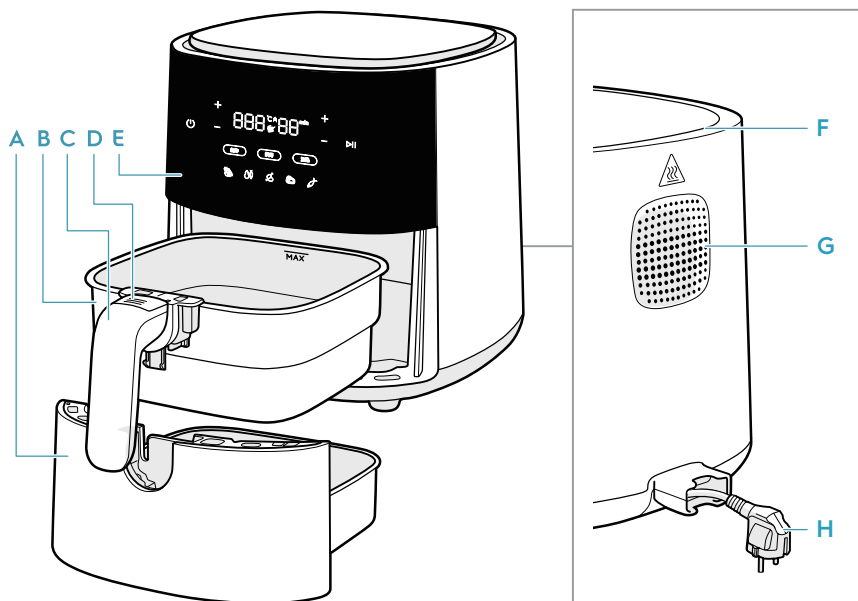
請勿將異物插入安全開關內,以免發生危險。

**警告:高溫表面。** 

此電器不能連接至外部定時器開關。



## 外觀概覽



A 煎鍋

B 炸籃

C 炸籃把手

D 炸籃解鎖鍵

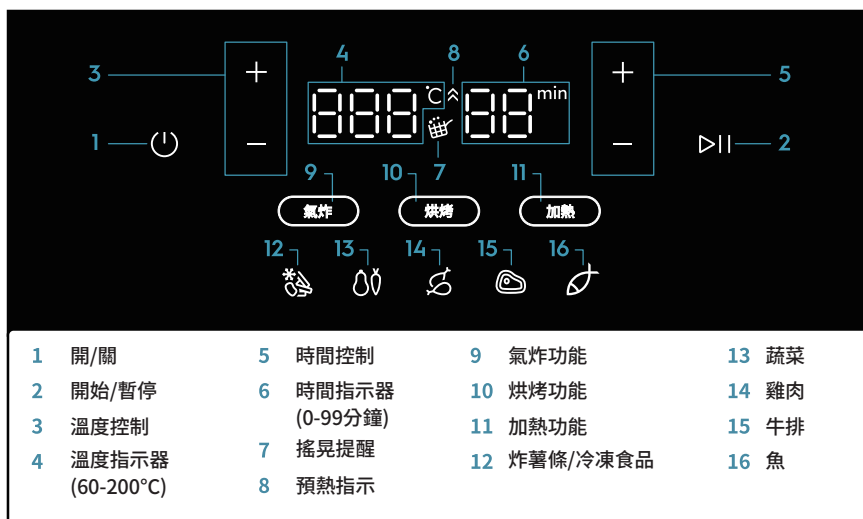
E 控制面板

F 進氣口

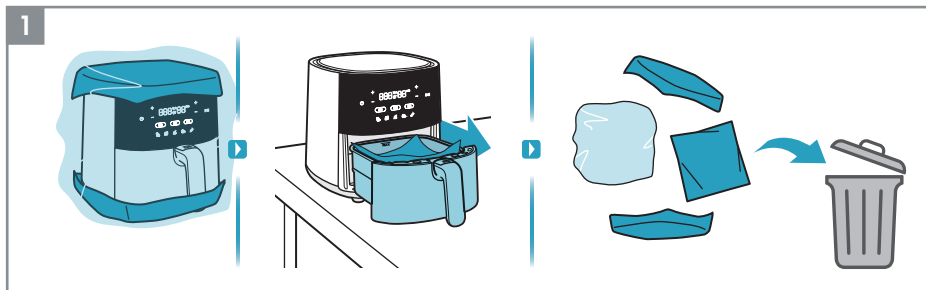
G 出氣口

H 電源線

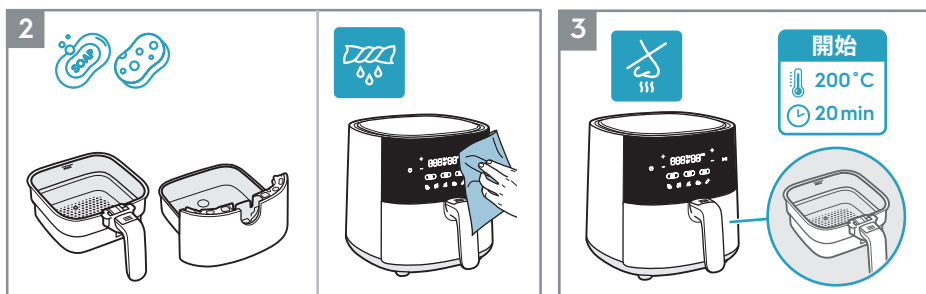
### 配件可能因型號而異



## 首次使用前

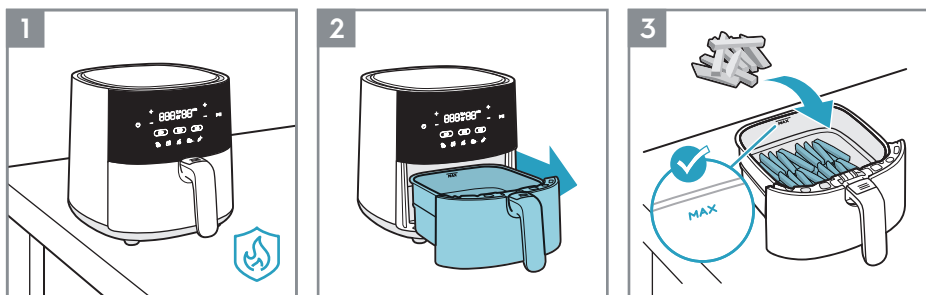


1. 拆除所有包裝和防護材料。

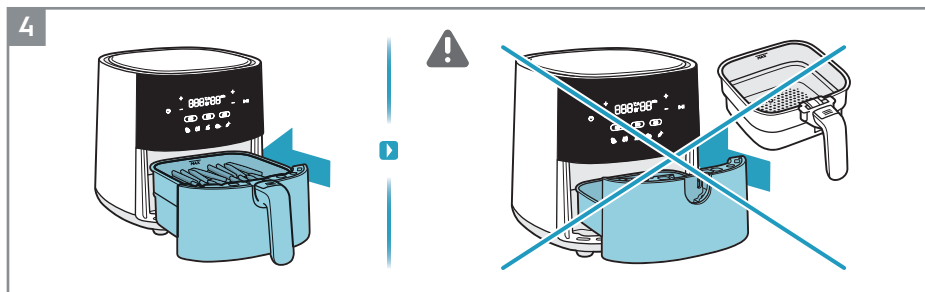


2. 用溫水和洗潔劑清洗炸籃和煎鍋。使用軟布擦拭電器內外。
3. 新產品在最初幾次使用時發出異味是正常現象。  
首次使用前，讓氣炸鍋在200°C下空載運行20分鐘，以避免這種情況。

## 使用方法

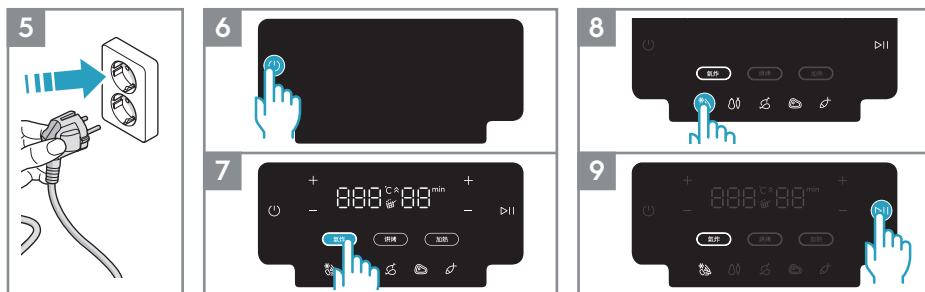


1. 將電器放在平坦、穩固、耐熱的表面上。
2. 拿出煎鍋，放在穩固的表面上。
3. 在炸籃裏放入食物，同時觀察“MAX”最大容量指示線，避免放入過量的食物。



4. 將裝有食物的煎鍋完全推入電器至密合。

▲ 警告：請勿在沒有炸籃的情況下使用本電器。



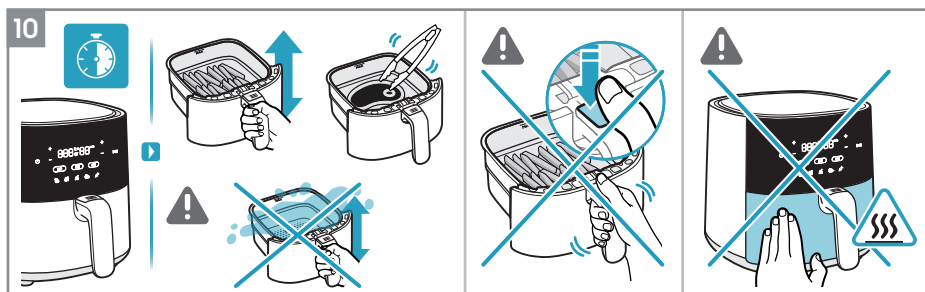
5. 將電器插頭插入電源插座。

6. 按下“開/關”鍵。

7. 選擇烹飪方式。例如氣炸功能。

8. 根據您的口味調整時間和溫度，或選擇一種內建食譜。例如炸薯條。

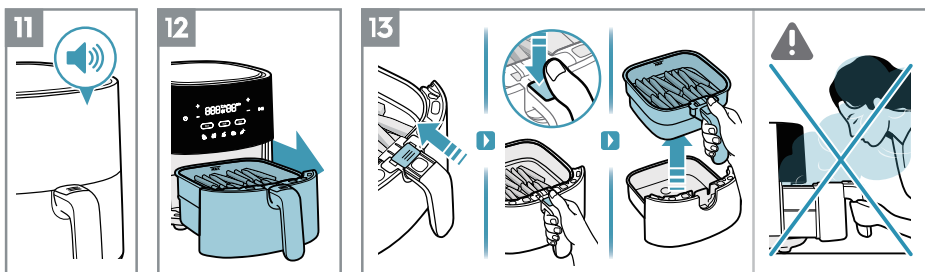
9. 按下“開始/暫停”鍵。



10. 根據食材的類型，在烹飪過程中或每7分鐘用耐熱工具翻轉一次食物，或者小心地輕微搖晃炸籃裏的食物(參見烹飪指南)。切勿大力搖晃炸籃，以避免食物噴濺造成燙傷。

▲ 警告：在搖晃食物時，請謹慎操作，切勿按下“炸籃解鎖鍵”。

▲ 警告：電器運轉過程中，表面溫度較高，請小心使用。



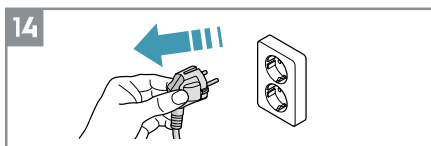
11. 烹飪計時結束後，電器會發出蜂鳴聲。

12. 小心地取出煎鍋，放置在耐熱平面上。

13. 從煎鍋中取出炸籃，步驟如下：

- 滑動透明的按鍵蓋
- 按下“炸籃解鎖鍵”
- 從煎鍋中提起炸籃

▲ 警告：在烹飪過程中或結束後打開炸籃，會冒出灼熱蒸氣。請在打開時，確保您的臉部、手臂和雙手遠離蒸氣。



14. 使用過後，拔出電源插頭。



### 預熱指示

“預熱指示”會在選擇“烘烤功能”時啟動，讓氣炸鍋在烹調您喜愛的烘焙食譜前先進行預熱來達到理想溫度。計時器會在預熱完成後才開始倒數。

在預熱過程中，您可以按下“開始/暫停”鍵跳過預熱步驟，並直接開始計時。此時時間指示器的數字會閃爍三次，然後開始倒數計時。

注意：預熱過程中會持續顯示溫度上升的狀態，一旦達到目標溫度，螢幕上的溫度與時間數字會閃爍三次，同時發出三次蜂鳴聲，“預熱指示”圖示將會熄滅。



### 搖晃提醒

“搖晃提醒”會在一些內建食譜中啟動，例如炸薯條/冷凍食品、蔬菜和雞肉。



















當需要搖晃或翻轉食物時，“搖晃提醒”圖示會亮起並閃爍一分鐘，同時發出三次蜂鳴聲。

“搖晃提醒”不是強制性的，因此即使沒有翻轉或搖晃食物，烹飪也會照常進行。

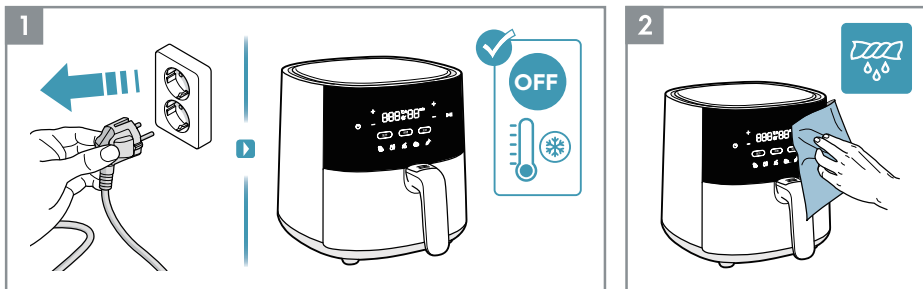
# 烹飪指南

EN

CNT

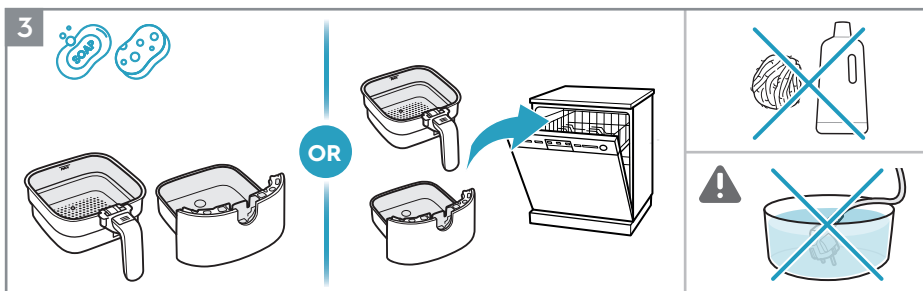
				 搖晃炸籃	 翻動食物	 添加油脂
<b>7毫米/10毫米</b>  冷凍薯條	300 ~ 800克	15 ~ 30分鐘	180 °C	✓		
<b>7毫米</b>  新鮮薯條	300 ~ 800克	20 ~ 30分鐘	180 °C	✓		✓
 蔬菜	100 ~ 500克	10 ~ 20分鐘	170 °C	✓		✓
 肉類	100 ~ 400克	10分鐘	200 °C		✓	
 冷凍肉排	100 ~ 200克	10分鐘	200 °C		✓	
 雞腿	100 ~ 500克	10 ~ 30分鐘	180 °C		✓	
 雞翅	100 ~ 500克	13 ~ 20分鐘	180 °C		✓	
<b>最多1.2公斤</b>  全雞	800 ~ 1200克	45 ~ 60分鐘	180 °C		✓	
 海鮮魚類	100 ~ 500克	10 ~ 15分鐘	140 °C		✓	
 冷凍海鮮魚類	100 ~ 500克	10分鐘	180 °C		✓	
 杯子蛋糕	25 ~ 50克/個	10分鐘	170 °C			

## 清潔維護



1. 清潔前，請務必拔下電器插頭並等待機器冷卻。

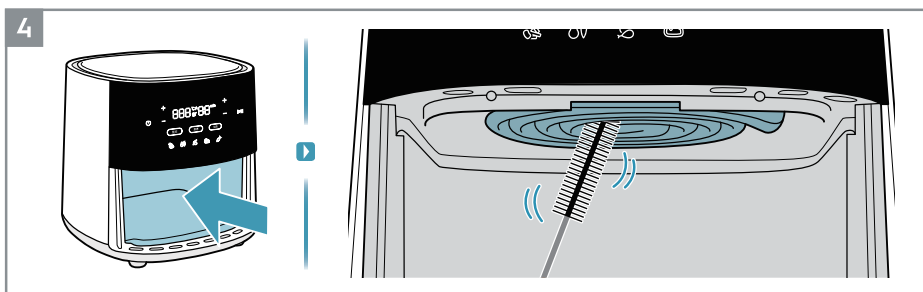
2. 使用軟布擦拭電器表面。



3. 使用溫水和洗潔劑清洗炸籃和煎鍋，或使用洗碗機清洗。

注意：避免使用研磨性清潔產品或金屬工具，以免損傷防沾塗層。

▲ 警告：切勿將產品、電源線或插頭浸入水或任何其他液體中。



4. 使用清潔刷清潔加熱元件。


注意：在清潔加熱元件前，請確保電器已完全冷卻。


## 疑難排解

問題	可能的原因
無法啟動或操作電器。	<ul style="list-style-type: none"> <li>電器與電源沒有正確連接。</li> <li>炸籃和煎鍋沒有處在正確位置。確保它們完全被推入電器以接通電源。</li> <li>沒有設定烹飪時間。</li> </ul>
無法將煎鍋推入電器。	<ul style="list-style-type: none"> <li>炸籃裝填的食物已經超過最大容量。</li> <li>炸籃沒有放置到位。將炸籃正確放入煎鍋後，應聽到咔噠聲。</li> <li>煎鍋底部有異物，致使煎鍋無法正確推入。</li> </ul>
電器冒出白煙。	<ul style="list-style-type: none"> <li>您烹飪的食物含有過多油脂。</li> <li>煎鍋和炸籃是乾淨的。</li> </ul>
顯示螢幕出現E1	<ul style="list-style-type: none"> <li>溫度傳感器停止運作或無法連接。</li> </ul>
顯示螢幕出現E2	<ul style="list-style-type: none"> <li>溫度傳感器已經短路。</li> </ul>

\* 如果顯示螢幕出現E1或E2報錯資訊，必須由伊萊克斯客服中心對電器進行維修。

## 環境關懷

回收有標誌  的材料。請將包裝材料放到適當的容器中予以回收。回收電子和電氣器具廢棄物有利於保護環境及人類健康。

請勿將有標誌  的器具與家用廢棄物一同處理。請將產品送至當地回收廠或聯絡市政府辦公室。

伊萊克斯（Electrolux）保留更改產品、資訊和規格的權利，恕不另行通知。

有鑒於世界各國對綠色環保意識的重視，伊萊克斯依循RoHS「危害性限制物質指令」誠實標示產品化學物質含量，關於本產品的RoHS聲明書，請上伊萊克斯官網--->「服務與維修」--->「RoHS聲明書」，依產品類別及型號檢索。

<https://www.electrolux.com.tw/support/rohs/>

electrolux.com

