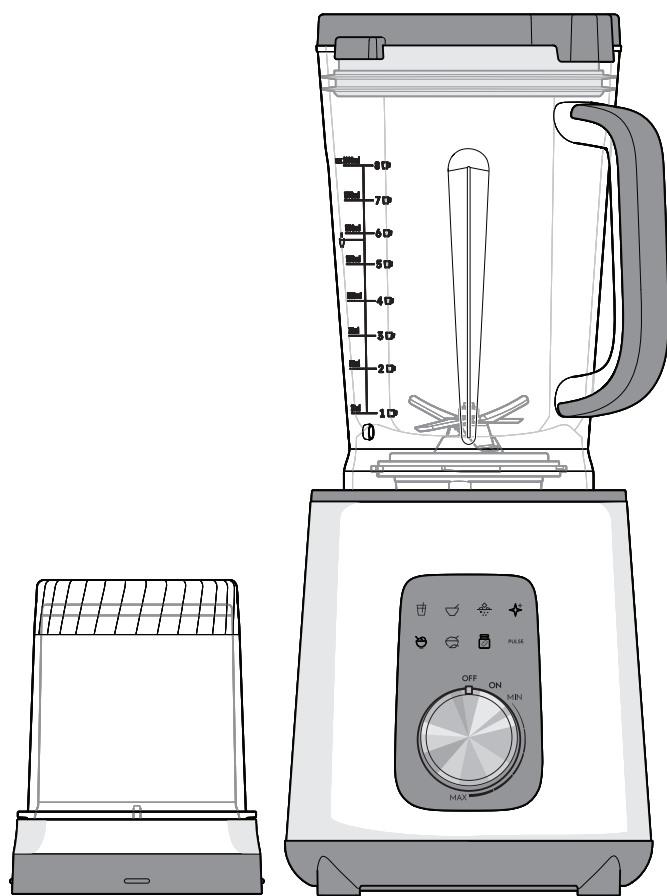


# Instruction Book

UltimateTaste 700

Blender

E7TB1-711P



## WE'RE THINKING OF YOU

Thank you for purchasing an Electrolux appliance. You've chosen a product that brings with it decades of professional experience and innovation. Ingenious and stylish, it has been designed with you in mind. So whenever you use it, you can be safe in the knowledge that you'll get great results every time.

**Welcome to Electrolux.**

Visit our website to:



Get usage advice, brochures, trouble shooter, service information:  
<https://www.electrolux.com.tw/support/#/>



Register your product for better service:  
<https://www.electrolux.com.tw/login-options/?returnUrl=/my-account/register-new-product/#/>



Buy accessories and consumables for your appliance:  
<https://www.electrolux.com.tw/appliances/accessories/#/>

## CUSTOMER CARE AND SERVICE

When contacting the service center, ensure that you have following data available. Model number, PNC, and serial number can be found on the rating plate.

Reference:

▼ 掃描QR碼以註冊
www.electrolux.com

QR Code  
15 x 15 mm

型號: E7TB1-711P

品名: 果汁機

PNC: 900 943 340

類別: E7TB1-711P

額定電壓及頻率: 110V~60Hz

額定消耗功率: 1200W

製造年份: YYYY

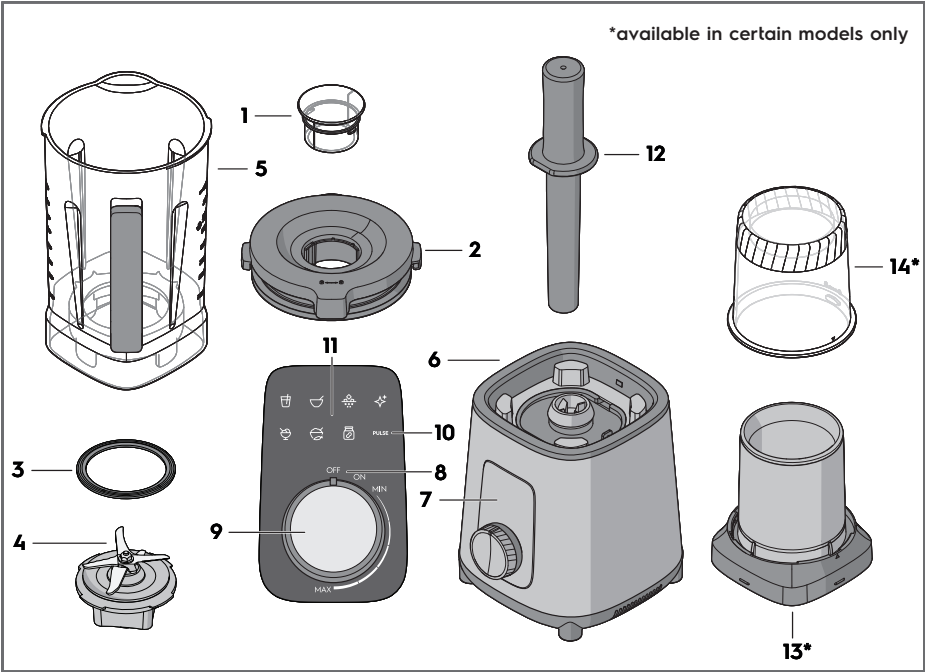
R33428  
RoHS

製造號碼: YWW00000

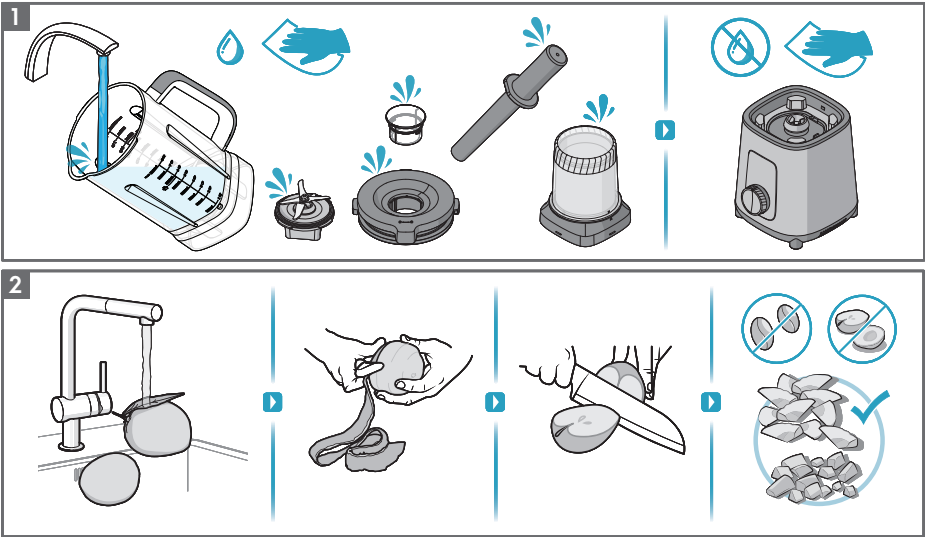
委製商/進口商: 新加坡商伊萊克斯股份有限公司 台灣分公司  
地址: 台北市松山區敦化南路一段3號4樓  
電話: 0800-888 259  
Electrolux 集團監製 中國製造

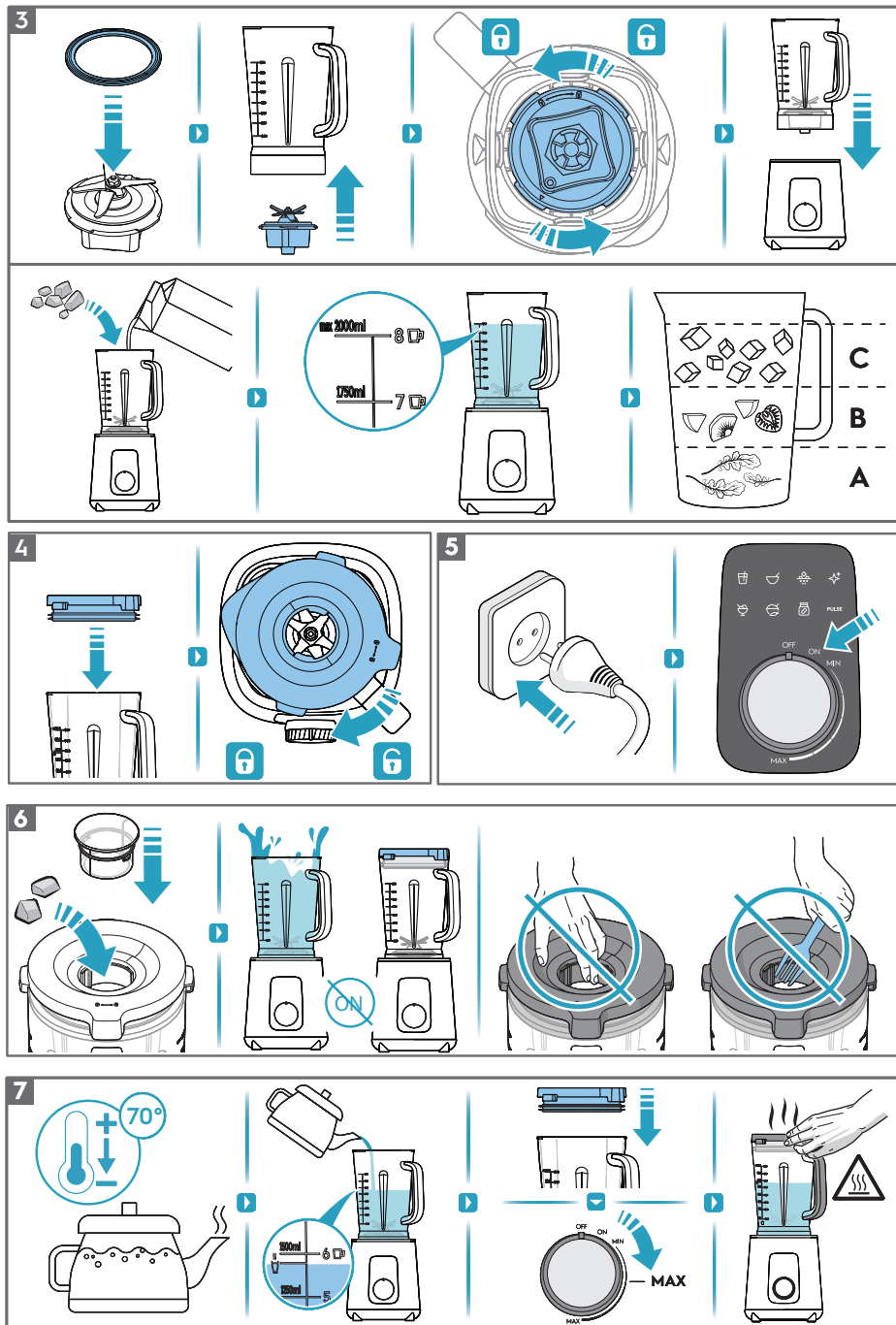


# COMPONENT

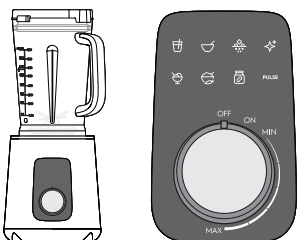


# HOW TO USE



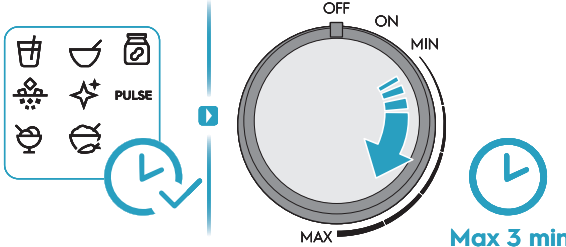
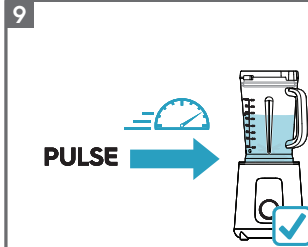


**8**

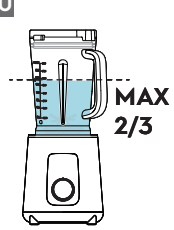
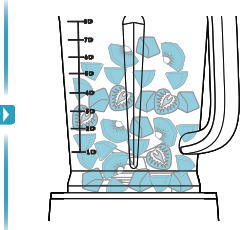
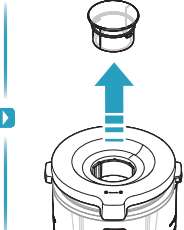
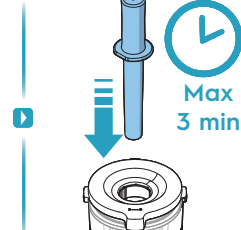


	Smoothie		Puree
	Soup		Nut Butter
	Ice Crush		Easy Clean
	Sorbet	<b>PULSE</b>	Pulse

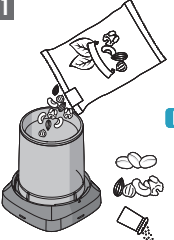
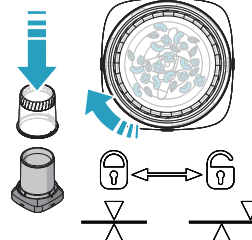
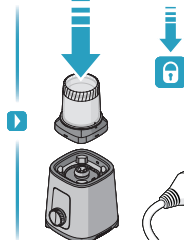
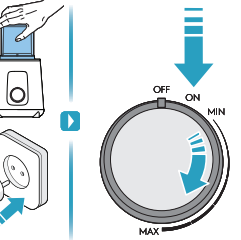
**9**


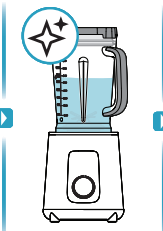

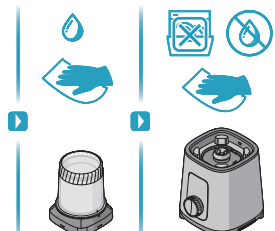
**10**

**11**

**12**

Thank you for choosing an Electrolux product. In order to ensure the best results, always use original Electrolux accessories and spare parts. They have been designed especially for your product. This product is designed with the environment in mind. All plastic parts are marked for recycling purposes.

## COMPONENTS

- |                       |                    |                               |
|-----------------------|--------------------|-------------------------------|
| 1. Measuring cup      | 6. Base            | 11. Automatic recipe programs |
| 2. Jar lid            | 7. Touch UI        | 12. Tamper                    |
| 3. Blade silicon ring | 8. ON/OFF          | 13. Grinder base*             |
| 4. Removable Blade    | 9. Speed selector  | 14. Grinder cover*            |
| 5. Jar                | 10. Pulse function |                               |

\*available in certain models only

## SAFETY ADVICE

**Read the following instructions carefully before using the appliance for the first time.**

- The blender appliance is designed for mixing food.
- This appliance is not intended for use by persons (including children) with reduced physical, sensory or mental capabilities, or lack of experience and knowledge, unless they have been given supervision or instruction concerning the use of the appliance by a person responsible for their safety.
- The appliance can only be connected to a power supply whose voltage and frequency comply with the specifications on the rating plate.
- If the supply cord is damaged, it must be replaced by the manufacturer, its service agent or similarly qualified persons in order to avoid a hazard.
- Always place the appliance on a flat level surface.
- Do not use or place the appliance near the edge of the table or counter, near hot gas, stove, electric burner or heated oven.
- Always switch off and disconnect the appliance from the mains if it is left unattended and before assembling, disassembling, cleaning, changing accessories or approaching parts that move during use.
- **WARNING:** the blades are very sharp. Care shall be taken when assembling, disassembling after use or during cleaning.
- This appliance is intended for domestic use only. It must not be used for other purposes.
- This appliance is intended to be used in household and similar applications such as:
  - staff kitchen areas in shops, offices and other working environments;
  - farm houses;
  - by clients in hotels, motels and other residential type environments;
  - bed and breakfast type environments.
- With heavy load (maximum capacity), do not let the blender run for more than 2 minutes. Allow it to cool down for at least 20 minutes before continuing.
- Do not exceed the maximum filling volume.

- Be careful when pouring hot liquid as released steam can caused burn.
- Be careful if hot liquid is poured into blender as it can be ejected out of the appliance due to a sudden steaming.
- Keep the jar with content refrigerated until the consumption unless the food is consumed immediately.
- Liquids are to be heated externally without the usage of the jar.
- Never operate appliance without lid.
- Do not use this application to stir paint. It may cause an explosion.
- Do not let cord touch or hang over hot surfaces.
- Do not immerse the appliance, its power cord or plug in water or any other liquid.
- Never process boiling liquids.
- Use only accessories or parts recommended for this appliance.
- The main jar cannot be used for blending or grinding hard and dry substance, except for ice cubes and frozen fruits. Please use grinder accessory instead.
- Keep hands and utensils out of the appliance during operation to avoid the risk of severe injury or damage to the appliance.
- This appliance is equipped with motor thermal protector. If the appliance overheats, it switches off automatically. Unplug the appliance and let it cool down until room temperature then put the mains plug back into the power outlet and switch on the appliance again. Please contact your dealer or an authorized service center if it is activated too often.
- **CAUTION:** In order to avoid a hazard due to inadvertent resetting of the thermal cut-out, this appliance must not be supplied through an external switching device, such as a timer, or connected to a circuit that is regularly switched on and off by the utility.
- Children should be supervised to ensure that they do not play with the appliance.
- Switch off the appliance and disconnect from supply before changing accessories or approaching parts that move in use.
- **WARNING:** Always operate the blender with the lid or the guard in position as indicated in the instructions.
- Unplug from outlet when not in use, before putting on or taking off parts and before cleaning.
- Allow to cool before assembling or disassembling parts and before cleaning the appliance.
- Do not touch hot surfaces. Use the handle.

## DISPOSAL



This symbol on the product or on its packaging indicates that the product may not be treated as household waste. To recycle your product, please take it to an official collection point or to an Electrolux service center that can remove and recycle the electric parts in a safe and professional way. Follow your country's rules for the separate collection of electrical products.



Recycle materials with this symbol. Put the packaging in relevant containers to recycled it.








Electrolux reserves the right to change products, information and specifications without notice.

## GETTING STARTED

1. **Before using your appliance for the first time**, remove all packing material such as plastics, stickers or tags that may be attached to the components. Clean the appliance and accessories.
2. **Always prepare the ingredients before blending**: rinse them thoroughly and cut them into pieces not larger than 3cm size for best results and remove any hard or large seeds. Remove any thick peel from the fruit or vegetables.
3. **Place the sealing ring around the blender blade assembly** before operating the product. **Caution!** Use only sealing rings provided by Electrolux. Place the blender blade assembly on the bottom of the main jar and rotate until it sits firmly. Follow the locking instructions on the bottom of the blade base. Place the assembled jar on the blender base until it stands firm in its position. While adding ingredients to the jar, make sure to place softest ingredients on the bottom of the jar and hardest on top.

**WARNING!** Do not exceed the maximum filling volume (2000ml), which equals the highest value on the jar scale. And fill the jar up to the minimum filling volume (250ml), which equals the lowest value on the jar scale.

4. **Put on the lid on and rotate it till it's locked.** Insert the measuring cup.
5. **Start the blender:** Plug into mains. Rotate the speed selector to "ON" position, the buttons will light up. Press the button with one of the recommended recipes or to select your desired processing speed by rotating the knob.
6. **You can add ingredients through the filler hole** after you started during processing. Never remove the lid while running the product.  
**Caution!** Never run the blender empty, running the blender empty can cause overheating and damage the product.  
**Caution!** Keep hands and utensils out of the blending jar while blending.
7. **Processing hot liquids:** We recommend to allow hot liquids to cool down before filling the jug down to 70°C. Fill the jar only half full (1000ml) and start processing on low speed. The blender jar can become very warm – take care to protect your hands.
8. **You have preset dedicated recipe programs as well as option to choose speed manually.** The blender will operate until the program is finished. To stop any program manually, press any button.  
**Note:** soup program can gently warm up liquids by blending with high speed. If the soup is not warm enough after the automatic program has finished, you can run the program one more time or rotate the speed selector to mix for additional 1-2 minutes.  
**Caution!** Maximum recommended continuous running time of the blender is 6 minutes.

	Smoothie		Puree
	Soup		Nut butter
	Ice Crush		Easy clean
	Sorbet	<b>PULSE</b>	Pulse

9. **You can give the ingredients a quick mix to get to your desired consistency** with the PULSE function. Press the PULSE button to go into pulse mode.

**CAUTION!** Due to the machine speed, processing times are much quicker than standard appliances. Unless you are accustomed to the machine, count your time carefully to avoid over-processing while choosing the speed manually using the knob.

## USING THE TAMPER

10. The jar should be not more than 2/3 full when the tamper is used during blending.
- To avoid overheating during blending, do not use the tamper for more than 3 consecutive minutes.
  - The splash disk (near the top of the tamper) and lid prevent the tamper from hitting the blades when the lid is secured properly in the position.
  - If the food does not circulate, the machine may have trapped an air bubble.
  - Carefully remove the measuring cup while making sure the lid stays firmly in place. Release the air bubble by inserting the tamper through the lid plug opening.
  - Holding the tamper straight down may not help the ingredients circulate. If necessary, point the tamper toward the sides or corners of the container. Do not try to force the tamper deeper into the container.

## USING THE GRINDER

11. **Use the grinder** for coffee beans, spices and nuts.

**Add the dried ingredients (e.g. dried fish, seeds),** place the lid and lock it with a rotating move. Place the grinder on the blender base and ensure it sits firmly.

**Start the blender** - Rotate the speed selector to "ON" position. The icons will light up illuminating the display. Choose speed manually.

## CLEANING AND CARE

12. Use the Easy Clean function or rinse the jar manually with detergent, or place into the dishwasher for cleaning.

Avoid leaving the ready dishes (e.g. soup, smoothie, juice) in the jug for a long time, especially when acidic ingredients (e.g. lime, lemon) is processed.

However, if crazing would appear, the effect is purely cosmetic and it does not impact the functionality of the jug.

Always use an Auto clean function or rinse the jug thoroughly with only clean water before placing it to the dishwasher.

## BLENDER RECIPES

Function	Recipes	Ingredients	Time
Ice crush	Ice cube	8-12 pieces (apx 2x3cm)	80 Sec
Smoothie	Strawberry smoothie	125g frozen strawberry, hulled and cut in half, 250g chilled milk (use tamper once needed)	1 Min
Nut butter	Nuts	290g roasted peanuts, 275g roasted cashews (use tamper once needed)	75 Sec
Soup	Potato leek soup	60g potatoes, 60g leek, 180g water (suggest to process cooked ingredients; launch program twice to make soup warmer)	3 Min
Sorbet	Strawberry sorbet	500g frozen strawberry, 1 tbs honey, 1 tbs lemon juice (scraping the sides and the bottom of the jar with tamper or spatula, pushing ingredients towards the blades)	70 Sec
Puree	Veggies	80g carrots, 80g potatoes, 80g onions, 120g water	1 Min
High speed (manual settings)	Carrot juice	1100g carrots, 800g water	1 Min
Middle speed (manual settings)	Vegetable soup	200g potatoes, 200g carrots, 200g onions, 400g water	90 Sec



## GRINDER RECIPES

EN

CHT

Function	Food	Preparation & Usage	Quantity	Time
Middle speed (manual settings)	Raw nuts	To make nut meal. Use in cakes, biscuits and muffins.	150g	5-15 Sec
Middle speed (manual settings)	Coffee beans	Use to prepare coffee grounds	100g coffee beans (apx 0.71mm)	20 Sec
High speed (manual settings)	Chili powder	Use to prepare spices	25g dried chili	10+10 Sec
High speed (manual settings)	Sesame seeds	Use to prepare spices	100g seeds (apx 2mm)	10+10 Sec

## TROUBLESHOOTING

Symptom	Analysis of Possible Causes	Countermeasure
Product does not work or stops unintentionally	Jar or grinder did not sit properly into machine base	Press the jar or grinder to make sure it sit in correct position, or check if the grinder cover is properly locked
	This appliance is equipped with motor thermal protector. If the appliance overheats, it switches off automatically	Unplug the appliance and let it cool down until room temperature then put the mains plug back into the power outlet and switch on the appliance again.
Tamper does not help to push ingredients down	Excessive amount of food processing	Reduce the quantity of ingredients
	Ingredients stick to blade	Cut off the power supply, clean up the blade on the ingredients
The abnormal odor products, hot, the phenomenon such as smoking	Excessive amount of food processing	Reduce the quantity of ingredients
	Product continuous working time is too long	Shorten the product continuous working time
	Processing the ingredients if temperature is too high	The temperature of the ingredients do not exceed 70 °C

## 伊萊克斯 以人為本的貼心設計

感謝您購買伊萊克斯電器。您選擇了一款集數十年專業經驗和創新為一身的產品。它製作精巧，外觀時尚，細節設計無不為您著想。無論您何時使用，都可以完全放心，它將成為您生活中的出色助手。

歡迎使用伊萊克斯產品。

請瀏覽我們的網站：



獲得使用建議、產品手冊、故障解決方案、服務資訊：  
[www.electrolux.com.tw/support/#/](http://www.electrolux.com.tw/support/#/)



註冊您的產品，獲得更完善的服務：  
<https://www.electrolux.com.tw/my-account/register-new-product/#/my-product-registration>



為您的電器購買配件和耗材：  
<https://www.electrolux.com.tw/appliances/accessories/#/>

## 客戶關愛與服務

當您聯絡服務中心時，請確保您已準備好以下資訊。  
產品型號、PNC和序列號，這些資訊均可在產品標籤上找到。

參考樣式：

▼ 掃描QR碼以註冊

[www.electrolux.com](http://www.electrolux.com)

QR Code  
15 x 15 mm

 **Electrolux**

型號: E7TB1-711P  
品名: 果汁機  
PNC: 900 943 340  
類別: E7TB1-711P  
額定電壓及頻率: 110V~60Hz  
額定消耗功率: 1200W  
製造年份: YYYY

製造號碼: YWW00000

  
R33428  
RoHS

委製商/進口商: 新加坡商伊萊克斯股份有限公司 台灣分公司  
地址: 台北市松山區敦化南路一段3號4樓  
電話: 0800-888 259  
Electrolux 集團監製 中國製造

新加坡商伊萊克斯股份有限公司 台灣分公司

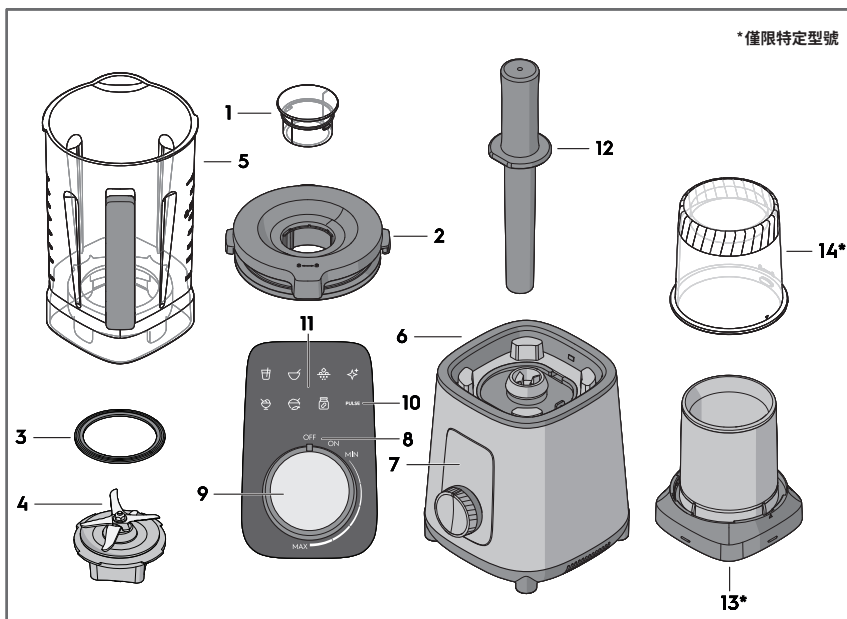
105408 台北市松山區敦化南路一段3號4樓

免付費客服專線: 0800-888-259

電郵: [service@electrolux.com.tw](mailto:service@electrolux.com.tw)

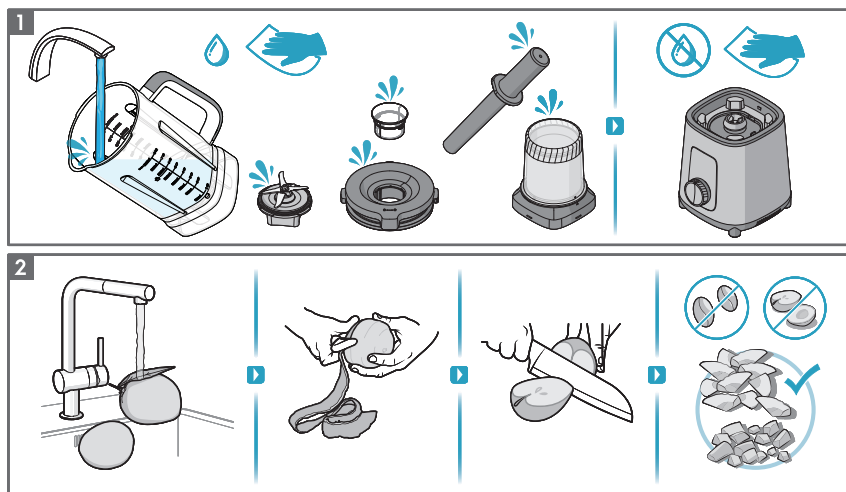
## 組件

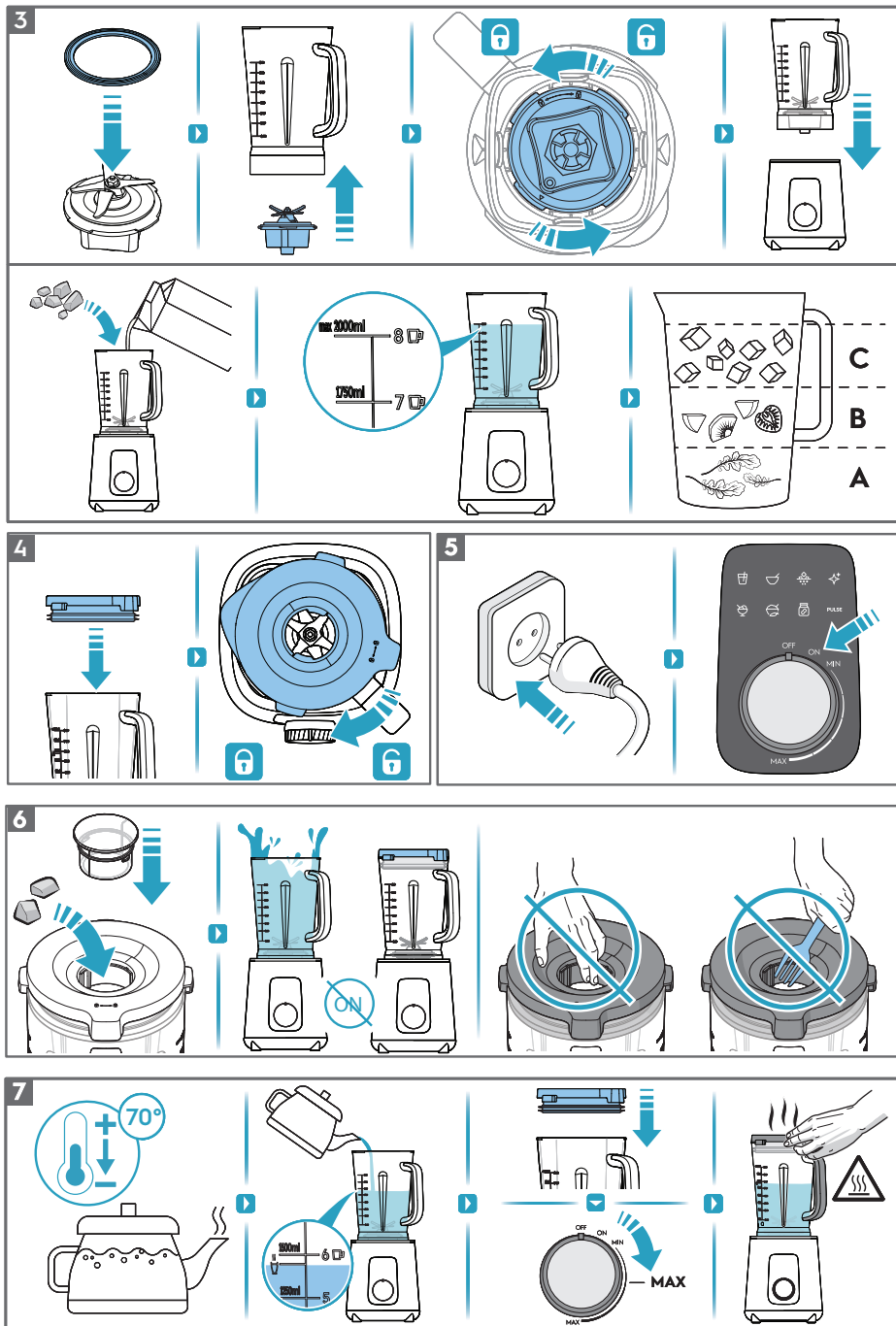
EN  
CHT



- |          |          |            |
|----------|----------|------------|
| 1. 量杯    | 6. 底座    | 11. 自動食譜   |
| 2. 攪拌杯蓋  | 7. 觸控介面  | 12. 攪拌棒    |
| 3. 刀片砵膠圈 | 8. 開/關   | 13*. 研磨底座* |
| 4. 可拆卸刀組 | 9. 速度選擇  | 14*. 研磨杯罩* |
| 5. 攪拌杯   | 10. 瞬速功能 |            |

## 使用說明



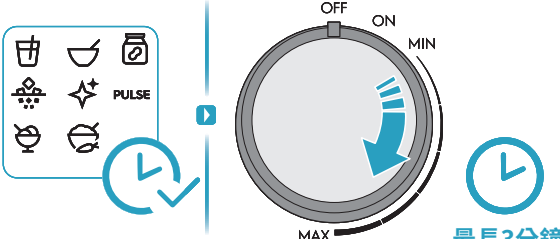


8



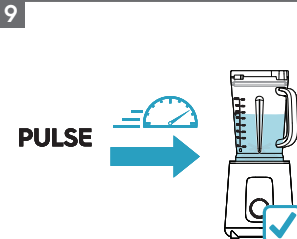
	奶昔		蔬果泥
	濃湯		堅果醬
	碎冰		快速清潔
	雪葩	<b>PULSE</b>	瞬速

9

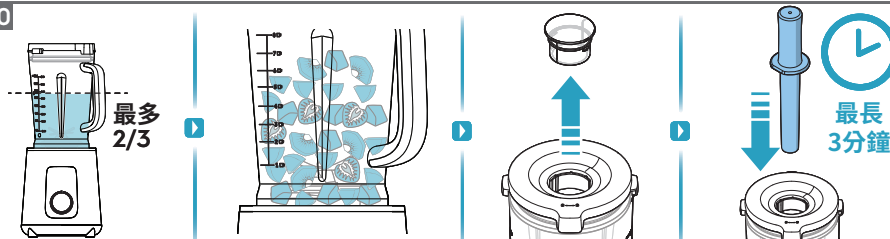


**PULSE**

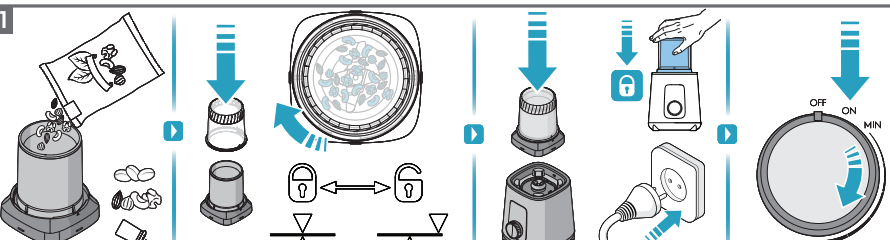
最長3分鐘



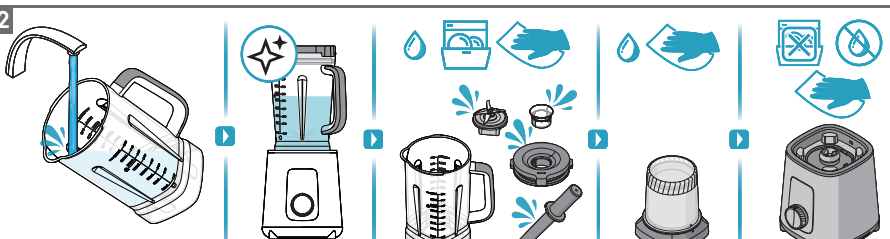
10



11



12



感謝您選擇伊萊克斯產品。為確保獲得最佳效果，請您始終使用伊萊克斯原裝配件和部件。它們是專為您的產品而設計。本產品在設計時考慮了環保因素，所有塑料部件均已標有可回收利用標誌。

## 安全建議

**首次使用本電器之前，請仔細閱讀以下事項：**

- 該果汁機僅用於混合食物。
- 本產品不可由肢體殘障、感覺或精神障礙以及缺乏相關經驗和知識的人員（包括兒童）使用，除非有負責其安全的人員對其進行監督或指導。
- 本產品只能連接到電壓和頻率均符合產品標籤上規定的電源。
- 如果電源線受損，應由伊萊克斯或其服務代理商或具備類似資質的人士更換，以免發生危險。
- 務必將本產品放置在平穩的檯面上。
- 本產品不可放在桌子或操作臺的邊緣，也不要放在熱氣體、火爐、電爐或加熱的烤爐附近使用或放置本產品。
- 本產品在無人看管時，或在組裝、拆卸、清潔、更換組件或觸碰會轉動的組件之前，請務必關閉本產品開關並斷開電源。
- **警告：**刀片非常鋒利。在組裝、使用後拆卸或清潔時應格外小心。
- 本產品僅供室內使用。不得用於其他目的。
- 本產品僅供家庭和類似場景應用，如：
  - 商店、辦公室及其他工作環境中的員工廚房區域；
  - 農舍；
  - 酒店、汽車旅館和其他居家環境的住戶使用；
  - 小型旅館或民宿環境。
- 在最大負荷（最大容量）下，不要讓果汁機連續運行超過2分鐘。在繼續使用前，至少讓它冷卻20分鐘。
- 不要超過本產品標明的最大裝填量。
- 倒入熱液體時要小心，因為釋放的蒸汽可能會造成燙傷。
- 如果高溫液體大量倒入本產品時一定要小心，瞬間冒出的熱氣會讓高溫液體從產品濺出。
- 非即食的食物，請將裝有食物的攪拌杯置於冰箱冷藏。
- 液體需在攪拌杯外加熱，不應使用攪拌杯加熱液體。
- 蓋子沒有蓋好時，請不要操作本產品。
- 不要使用本產品攪拌油漆。這很危險，會導致爆炸！
- 不得讓電源線接觸到高溫表面，或懸掛在桌子或操作臺邊緣。

- 不要將產品、電源線或插頭浸入水中或任何其他液體中。
- 請勿使用本產品處理正在沸騰的液體。
- 僅使用推薦的配件或部件。
- 除冰塊和冷凍水果外，攪拌杯不能用於攪拌或研磨堅硬和乾燥的物體。請改用研磨配件。
- 運行期間，為避免嚴重傷害或損壞本產品，請勿將手或其他器具放入本產品。
- 本產品配備了電機熱熔斷路器。如果設備過熱，它將自動關閉。拔掉插頭，讓設備冷卻至室溫，然後再將電源插頭插入電源插座並重新開啓設備。如果過熱，熱熔斷路器過於頻繁啓動，請聯絡經銷商或授權服務中心。
- **警告：**為防止因熱熔斷路器意外復位而造成危險，本產品不得通過外部開關裝置供電，例如計時器，也不能連接到由公共設施定期打開和關閉的線路。
- 兒童不應在沒有監督的情況下使用本產品。
- 更換配件或接觸運轉中的部件前，必須關閉本產品並斷開電源。
- **警告：**操作果汁機時，必須按照說明書上的指示將蓋子或防護裝置放在合適的位置。
- 不使用時，更換組件或清潔之前，請拔掉插頭。
- 組裝、拆卸部件或清潔電器之前，請讓產品先冷卻。
- 切勿觸摸熱表面。請使用把手。
- 從機座移除攪拌杯或研磨杯之前，請確保本產品電源已關閉。

## 棄置



在產品或其包裝上附有該標誌，表明該產品不可作為家庭垃圾處理。棄置時，請將其交由官方回收站，或者帶到伊萊克斯服務中心，以安全、專業地拆除並回收電子組件。請遵循您所在國家關於電子產品分類回收的規定。



帶有此標誌的材料可以回收。請將包裝放入相應的容器中進行回收。

本手冊提及的產品、信息和規格等都可能隨時更改，恕不另行通知。

有鑒於世界各國對綠色環保意識的重視，伊萊克斯依循RoHS「危害性限制物質指令」誠實標示產品化學物質含量，關於本產品的RoHS聲明書，請上伊萊克斯官網--->「支援服務」--->「RoHS聲明書」，依產品類別及型號檢索。<https://www.electrolux.com.tw/support/rohs/#/>

## 開始使用

- 首次使用您的電器之前：**拆掉全部包裝材料，例如組件上的塑膠套、標籤或標誌，並清潔電器和配件。
- 準備食材：**將食材完全清洗乾淨，切成不超過3公分的小塊並去掉堅硬或較大的果核。去掉水果或蔬菜的表皮。
- 使用之前，在攪拌器刀片組件周圍放置矽膠圈。注意！**只能使用伊萊克斯提供的矽膠圈！  
將攪拌器刀片組件放置在攪拌杯上，確保位置正確。按照刀片底部的鎖定說明操作。將組裝好的攪拌杯放置在底座上，務必確定放置穩固。向攪拌杯中加入食材時，確保將最軟的食材放在底部，最硬的食材放在上面。  
**注意！**不要超過標明的最大允許裝填量 2000ml，即攪拌杯刻度上的最大值。最少裝填量請至少達到250ml，即攪拌杯刻度上的最小值。
- 將蓋子蓋上並旋轉至鎖定位置。**插入量杯。
- 啟動攪拌機：**插入電源。將旋鈕轉至"開"的位置，按鈕燈將亮起。按下推薦食譜按鈕或通過旋鈕選擇您希望的處理速度。
- 在開始攪拌後，您可以通過填料孔添加食材。**產品運行時切勿打開蓋子。  
**注意！**切勿讓本產品空轉，空轉可能會導致過熱並損壞產品。  
**注意！**攪拌時，手和其他器具應儘量遠離攪拌機。
- 加工高溫液體：**我們建議將高溫液體倒入料理攪拌杯前要使其降溫至70°C。先倒入半杯(1000ml)並開始用低速攪打。攪拌杯的溫度會升高，注意保護您的雙手。
- 產品已經預先設定了多種食譜程序，並且可以手動選擇速度。**果汁機將持續運轉直至程序執行完畢。按下任意按鈕可以手動停止程序。  
**注意！**濃湯食譜程序會透過高轉速讓湯品變得溫熱。在食譜程序結束後，如覺得不夠溫熱，建議可再啟動一次濃湯食譜程序，或手動調整速度再攪拌1-2分鐘。  
**注意！**連續攪拌時間最長請控制於6分鐘內。

	奶昔		蔬果泥
	濃湯		堅果醬
	碎冰		快速清潔
	雪葩	PULSE	瞬速



9. 您可以使用瞬速功能快速攪拌食材以達到您期望的程度。按下“瞬速”按鈕進入瞬速模式。

注意：由於本產品運行速度很快，處理時間比標準電器要短得多。如果您還不太熟悉，手動調速時一定要注意掌握時間，以防食材處理過度。

## 使用攪拌棒

10. 使用攪拌棒攪拌時，裝填量不應超過2/3。

- 為避免在攪拌過程中過熱，請不要連續使用攪拌棒超過3分鐘。
- 攪拌棒頂部附近的防濺盤和蓋子可以防止攪拌棒在蓋子蓋緊時接觸到刀片。
- 如果食物沒有在攪拌杯內正常流動，可能是內部有空氣。
- 在確保蓋子蓋緊的情況下，小心地取出量杯，通過蓋子上的插孔插入攪拌棒來釋放空氣。
- 直接向下按攪拌棒可能無法有效攪拌食材。如有必要，請將攪拌棒斜向容器的側邊或角落，但切勿用力過猛。

## 使用研磨器

11. 研磨器可用於研磨咖啡豆、香料和堅果。

**加入乾燥食材（例如魚乾、堅果），蓋上蓋子並旋緊。**將研磨器放置在底座上，確保其穩固  
**啓動果汁機** - 按下開機按鈕，圖標亮起後，手動選擇速度。

## 清潔與養護

12. 使用快速清潔功能或手動加入清潔劑清洗攪拌杯，也可以放入洗碗機清潔。

避免將做好的食物（例如湯、雪葩、果汁）長時間放在攪拌杯中，尤其是加工了酸性食材（例如酸橙、檸檬）時。即便出現了裂紋，通常也僅是外觀問題，並不會影響攪拌杯的完整性。在放入洗碗機之前，務必使用自動清潔功能或僅用清水沖洗攪拌杯。

## 攪拌機食譜

功能	食譜	食材	時間
碎冰	冰塊	8-12塊 (約2x3cm)	80秒
奶昔	草莓奶昔	125克冷凍草莓 (去蒂切半) + 250克冰鎮牛奶 (需要時使用攪拌棒)	1分鐘
堅果醬	堅果醬	290克烤花生，275克腰果 (需要時使用攪拌棒)	75秒
湯	馬鈴薯 韭菜湯	60克馬鈴薯，60克韭菜，180克水 (建議使用已煮熟的食材; 運行兩次，可使湯更熱)	3分鐘
雪葩	草莓雪葩	冷凍草莓500g，蜂蜜1匙，檸檬汁1匙 (攪打時可適時使用攪拌棒或刮刀將食材集中至刀座附近)	70秒
蔬果泥	蔬菜	80克胡蘿蔔，80克馬鈴薯，80克洋蔥， 120克水	1分鐘
高速 (手動設置)	胡蘿蔔汁	1100克胡蘿蔔，800克水	1分鐘
中速 (手動設置)	蔬菜湯	200克馬鈴薯，200克胡蘿蔔，200克洋蔥， 400克水	90秒

## 研磨器食譜

功能	食物	預備與用途	數量	時間
中速（手動設置）	生堅果	製作堅果粉用於蛋糕、餅乾和鬆餅	150克	5-15秒
中速（手動設置）	咖啡豆	研磨咖啡	100克咖啡豆 (約0.7mm)	20秒
高速（手動設置）	辣椒粉	製作香料	25克乾辣椒	10+10秒
高速（手動設置）	芝麻	製作香料	100克芝麻 (約2mm)	10+10秒

## 故障排除

問題	可能原因	解決措施
產品意外停止	攪拌杯或研磨器未正確安置在底座	確保攪拌杯或研磨器正確安置，或檢查研磨杯是否已正確鎖緊
	本產品配備了熱熔斷路器，如果過熱，它會自動關閉。	拔掉插頭，讓本產品冷卻到室溫，然後重新插入電源並打開機器。
攪拌棒無法向下推動食材	待處理的食材過多	減少食材充填量
	食材黏在刀片上	切斷電源，清潔刀片和食材
氣味異常、產品過熱，出現冒煙等現象	待處理的食材過多	減少食材充填量
	機器連續工作時間過長	縮短連續工作時間
	待處理的食材溫度過高	應放置溫度不超過70°C的食材





